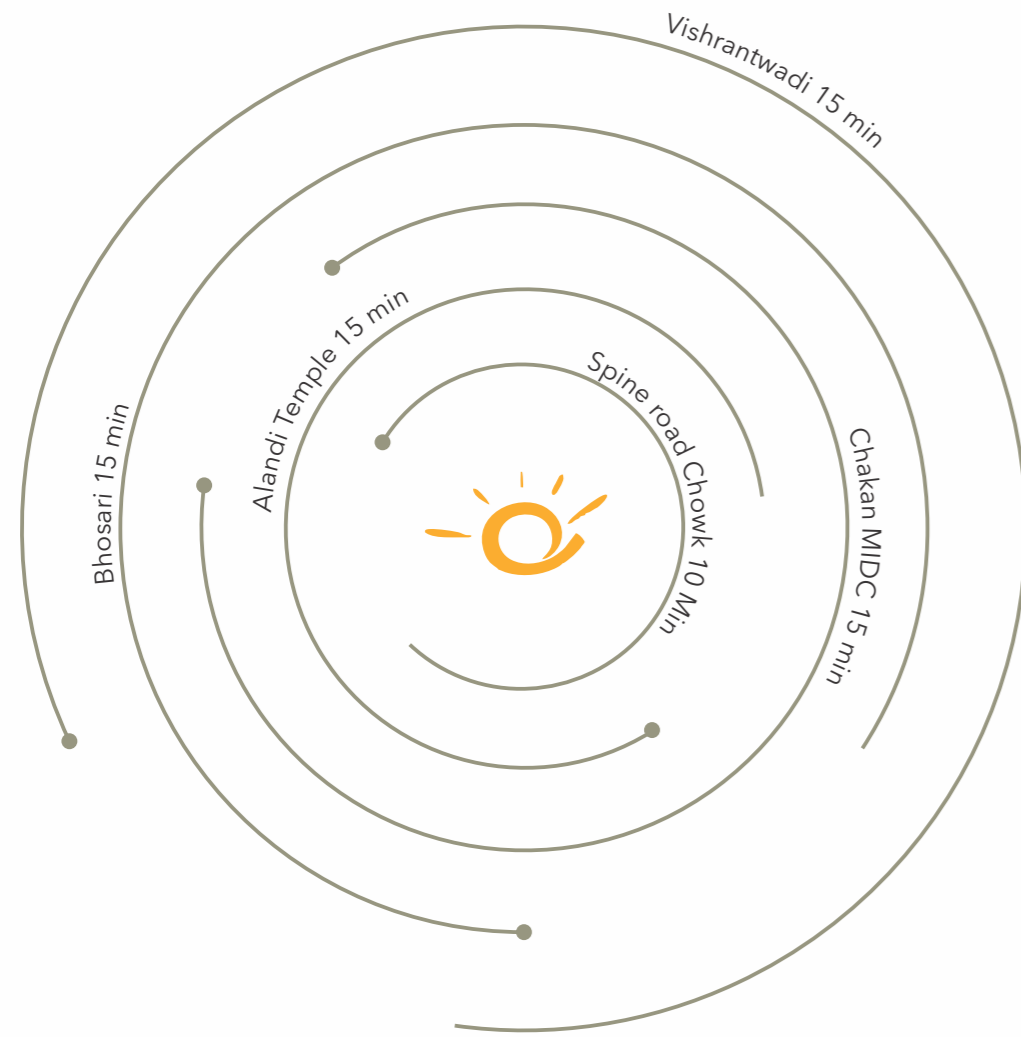


Travel time
to key places



INCREDIBLY
SPACIOUS
AND
AFFORDABLE
HOMES

A project by:



Shrikhande Consultants Pvt. Ltd.
Corporate Office: Maruti House,
2nd Floor, Above Renault Showroom,
GP - 187, 'G' Block, Therman Chowk,
MIDC Chinchwad, Pune - 411019

Tel : 020 - 27370029
Fax : 020 - 27370031
Email : info@themarutigroup.com
Website: themarutigroup.com

9373 164 480

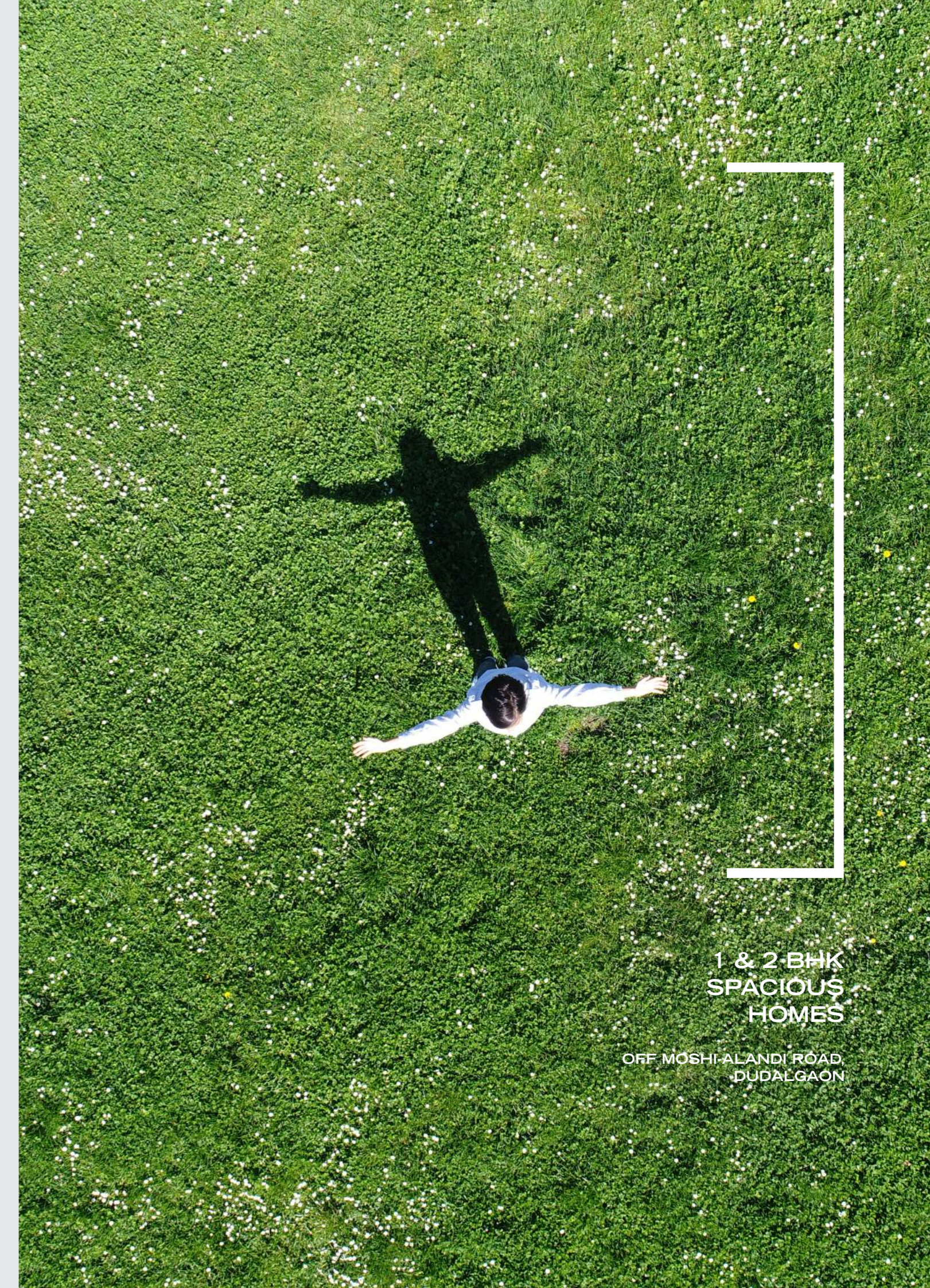
<https://www.facebook.com/marutihousing>
<https://www.instagram.com/marutihousing>

samanvay/2018

ravitej
1 & 2 BHK SPACIOUS HOMES



REG. NO
P52100019063



1 & 2 BHK
SPACIOUS
HOMES

OFF MOSHI-ALANDI ROAD,
DUDALGAON

ravitej
1 & 2 BHK SPACIOUS HOMES



When Space Meets Quality
You are peaceful from within



25 years of excellence in Construction & Real Estate. Over 60 projects completed across Navi Mumbai, Pune & PCMC.

The Maruti Group is defined by two words that make all the difference-Quality and Excellence. What began as a humble enterprise in 1985, has unfolded into a success story of vast measures; one that continues to be led by the vision and guidance of its founding director, Sunil Israni. The mantle of growth is now being carried forward by Amit Israni, a young and dynamic leader from the second generation. With two and a half decades of creating landmarks bearing their unmistakable stamp of perfect form and feature in Navi Mumbai, the Maruti Group has taken this a step further in Pune over the last 10+ years. The team of Civil Engineers and Management Professionals at Maruti Group has had over 25 years experience in

the business and boasts of assured quality and excellence, in all projects completed till date. Every project at The Maruti Group is seismically qualified, that provides for a high level of durability and strength, not just to the construction, but to the thousands of families residing in it. Clarity in principle, and transparency in operations and business ethics, has enabled the Maruti Group to successfully unite the suppliers, sub-contractors, associates and its customers under the umbrella of satisfaction. Timely possession has remained its hallmark and thousands of happy customers and over 15 lakh square feet of construction bear testimony to the dependability and distinction of the Maruti Group.



When Space Meets Affordability
Every moment becomes a memory



About Ravitej

What is it that you pay for when you buy a new home? The location, the amenities, the quality of construction. Yes sure! But most importantly you pay for the Space. The space within those four walls that you want to call your very own. And there is no reason you should be compromising on that. At Ravitej you don't!

Ravitej is our endeavour to offer comfortably spacious yet affordable homes for discerning home buyers. Drawing from our experience of over 25 years, homes at Ravitej are smartly designed to address practical requirements of home owners. The location of Ravitej, too has

been carefully chosen to ensure that you are within easy reach of industrial areas, hospitals, schools, markets and public transport.

At Ravitej you can choose from a 1BHK or 2BHK layout. Each home designed and built with the same attention to detail using materials from reputed brands tested for quality and durability. Ravitej offers space not just on the inside but also on the outside, with amenities such as landscaped garden and a children's play area.

With just 98 apartments, Ravitej has space for a select few! Go on and make this space your own.



1BHK CUT SECTION



2BHK CUT SECTION



Specifications

We understand that a house is not just 4 walls but a space where lives are built and memories are made.

To make this an enriching experience Guaranteed Specifications provide a premium living ambience and superior quality finish to every corner of the house.



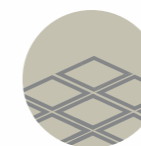
Structure

RCC framed structure - Earthquake
150mm External Walls
100mm internal walls
Sand faced external plaster
Smooth finish internal plaster



Electrical Fittings

Concealed copper wiring
Good quality electric switches
TV & telephone points in living room
Lifts in wings A and B with Generator back up
One door bell point for each flat



Flooring

Vitrified Ceramic flooring (2' x 2')
with skirting
Rustic flooring in terrace



Kitchen

Granite kitchen lintel platform with
stainless steel sink
Tile dado upto lined level along platform
Exhaust fan point
Electric point for water purifier



Doors and Windows

WPC , Water resistant, Door Frames for
Toilets & Rooms.
Laminated flush door
Solid Wooden door frames for main door.
Cylindricals locks for wc/bath & room.
Night Latch for main door.
Aluminum Sliding windows (Powder coated) .
Granite sills.



Toilets

Rustic flooring in toilets/bath/WC
7ft. Dado for toilets/bath/ 4ft. Dado in WC
Good quality CP & sanitary fittings
Hot & Cold water mixer
Concealed plumbing



Painting

Oil bond distemper internal paint
Semi Acrylic external paint

Other

Decorative compound wall
Flower beds
Fire Fighting as per PCMC rules

When Space meets Convenience,
Life becomes more fulfilling



Amenities

Amenities are smart, useful and make life at Ravikiran a fulfilling experience. While doing so, amenities that incur heavy maintenance and upkeep costs over time are avoided and only smart eco-friendly amenities find place at this beautiful site.



Children's
Play Area



Landscape
Garden



Solar Water
Heater



Intercom
System

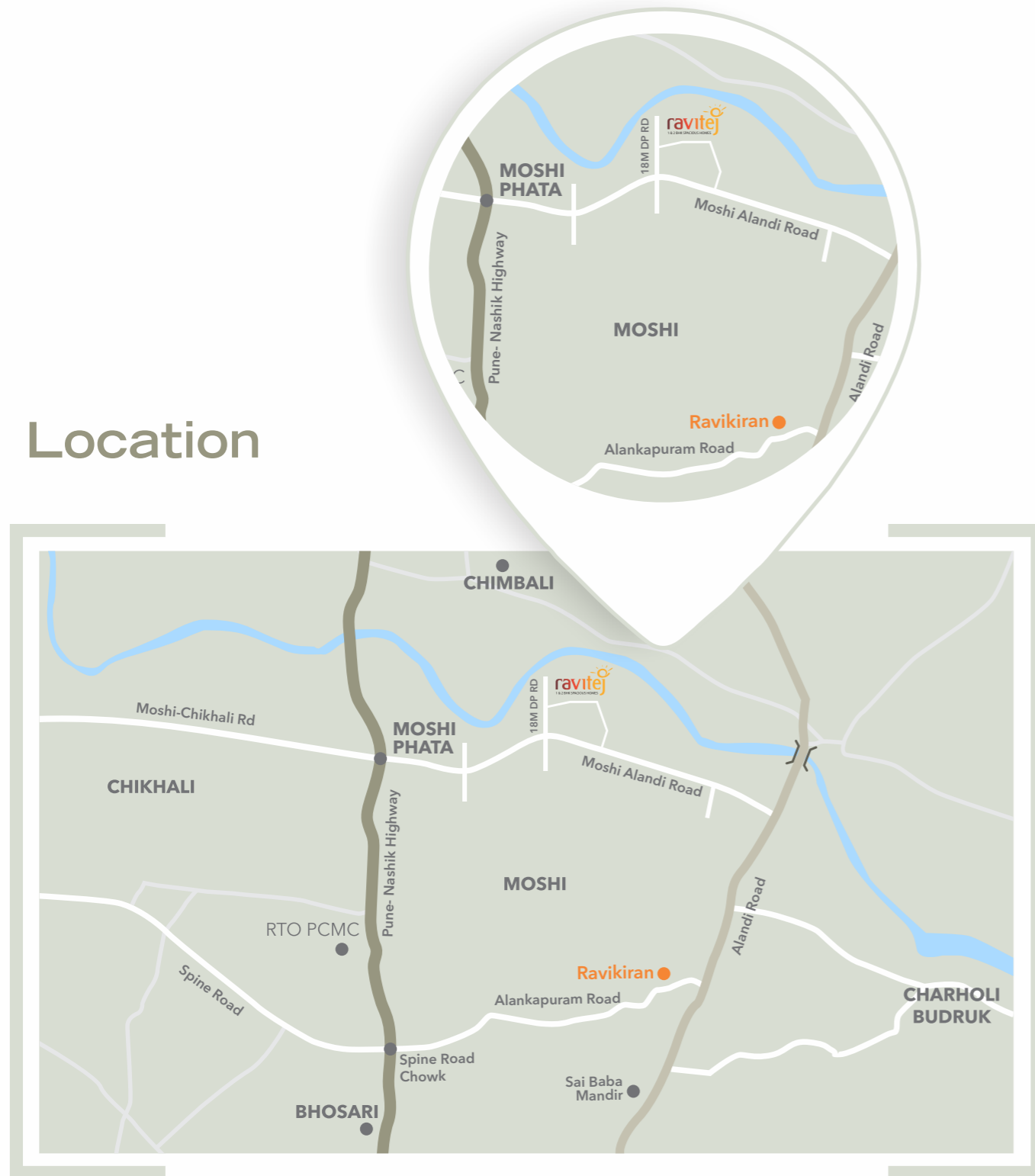


Power back-up
for Common
areas & Lifts



Designer
Entrance
Lobby

Location



RCC Consultant
Shrikhande Consultants Pvt. Ltd.
T: + 91 9730074311.
E: scplpune.design@gmail.com

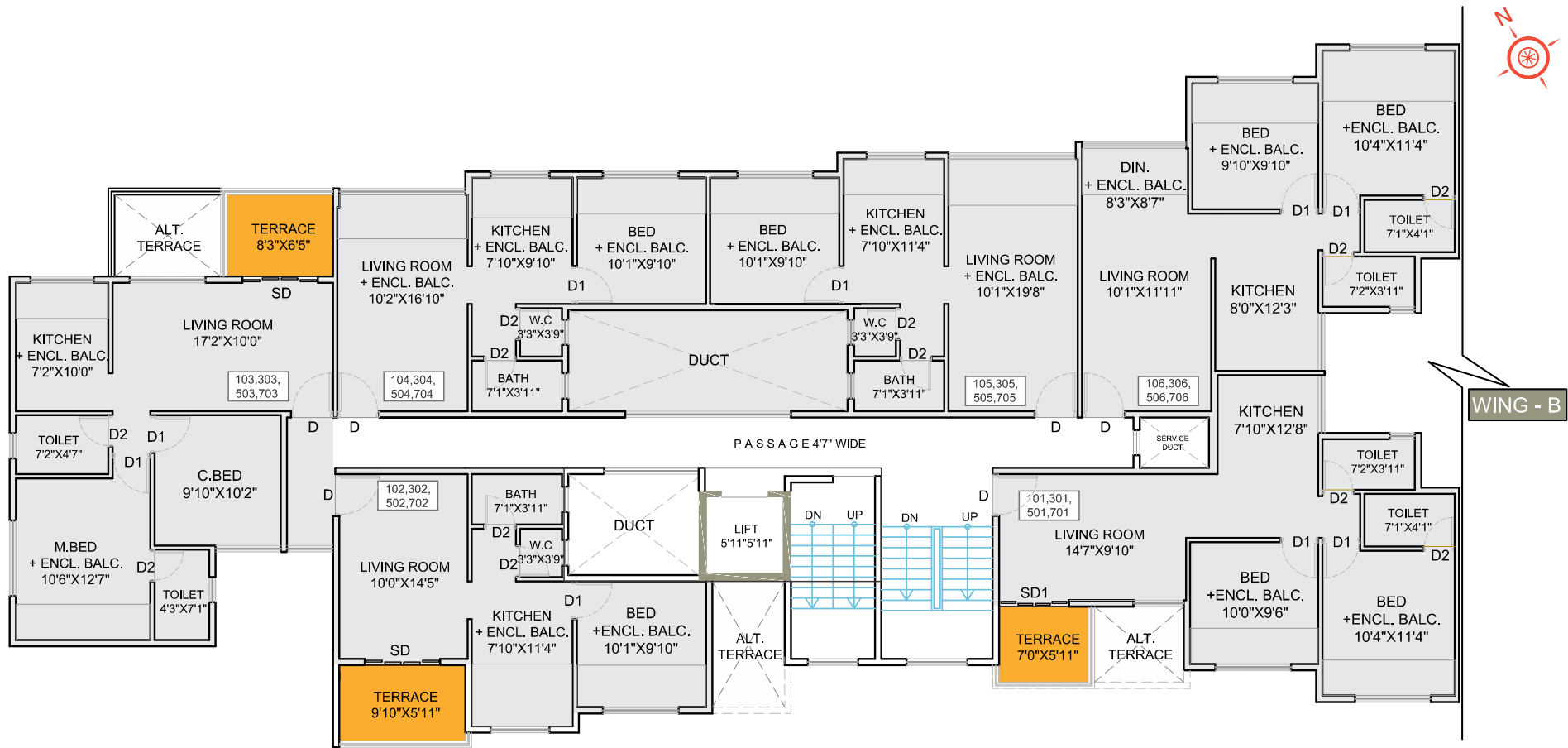
Consulting Architect
Homework Architects
T: +91 22 25232258 / 32944223
E: mshomework@gmail.com

Architect
Manik Buchade
Kimaya Associates
T: +91 20 64104203
E: architect@kimayagroup.com

Legal advisor
Adv. Gajanan B. Dhaygude
T: +91 9822437427
E: advdhaygude77@gmail.com

ravitej
1 & 2 BHK SPACIOUS HOMES





A project by:

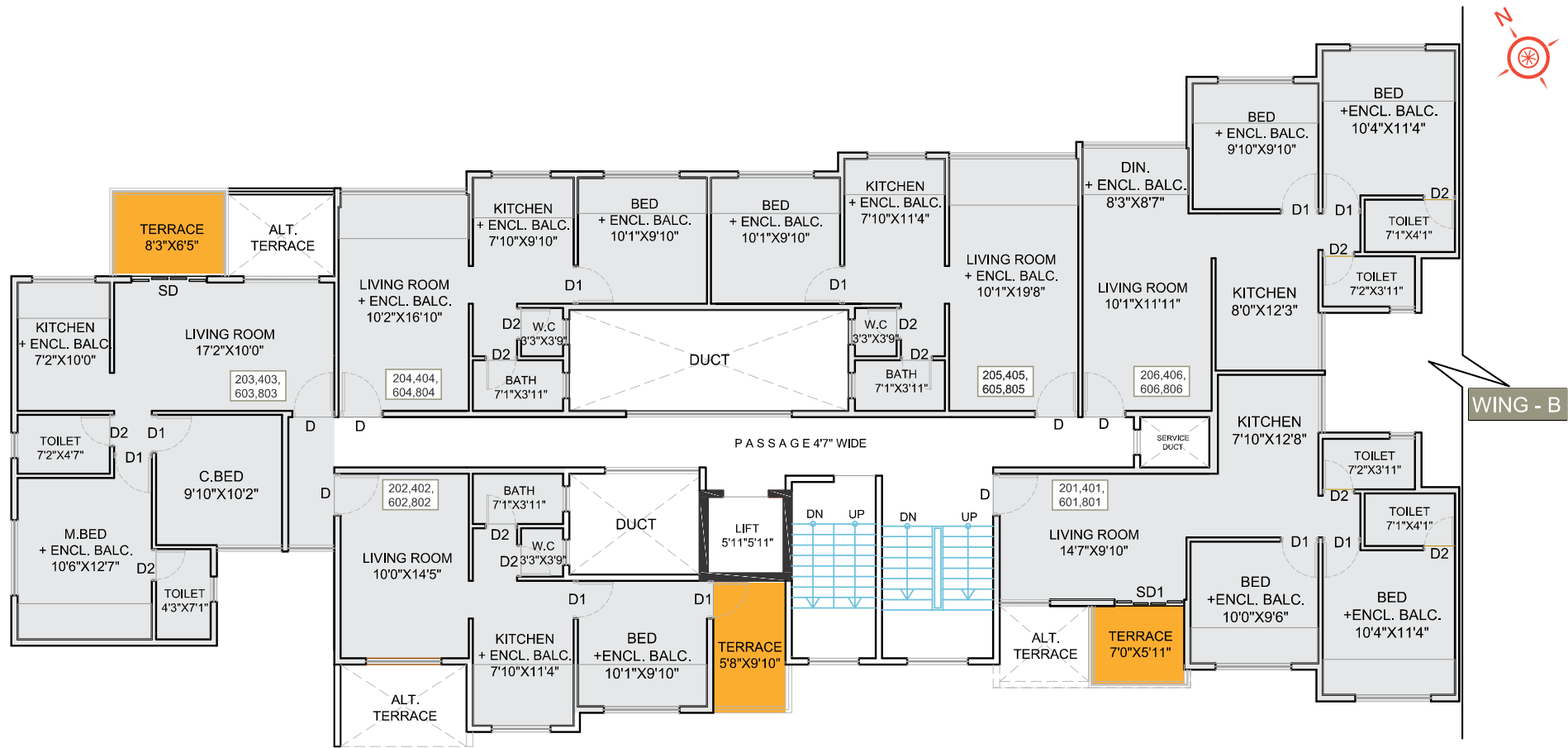


BUILDING - A

Typical floor plan

(1st, 3rd, 5th & 7th Floor)





A project by:



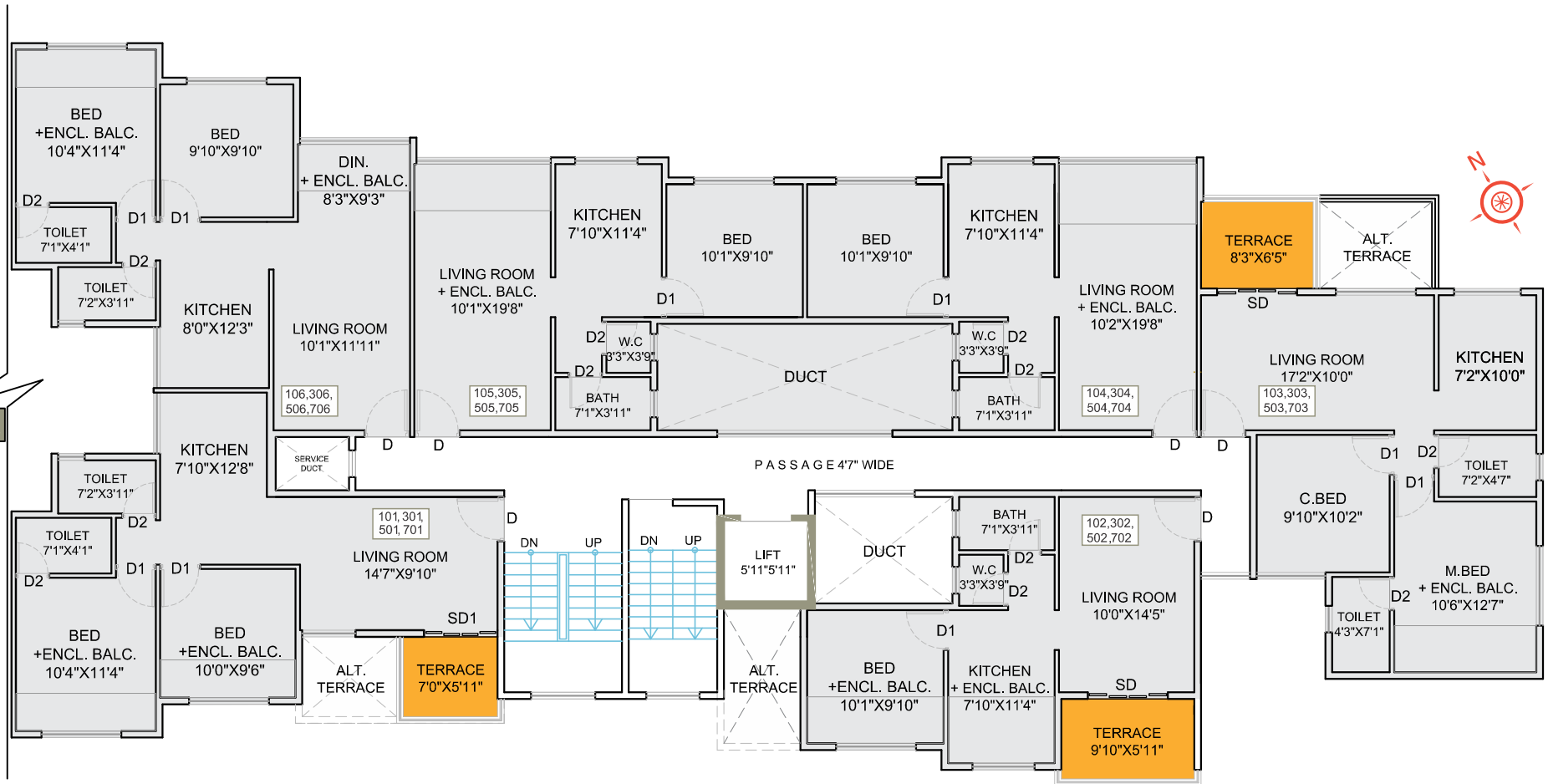
BUILDING - A

Typical floor plan

(2nd, 4th, 6th & 8th Floor)



WING - A



A project by:

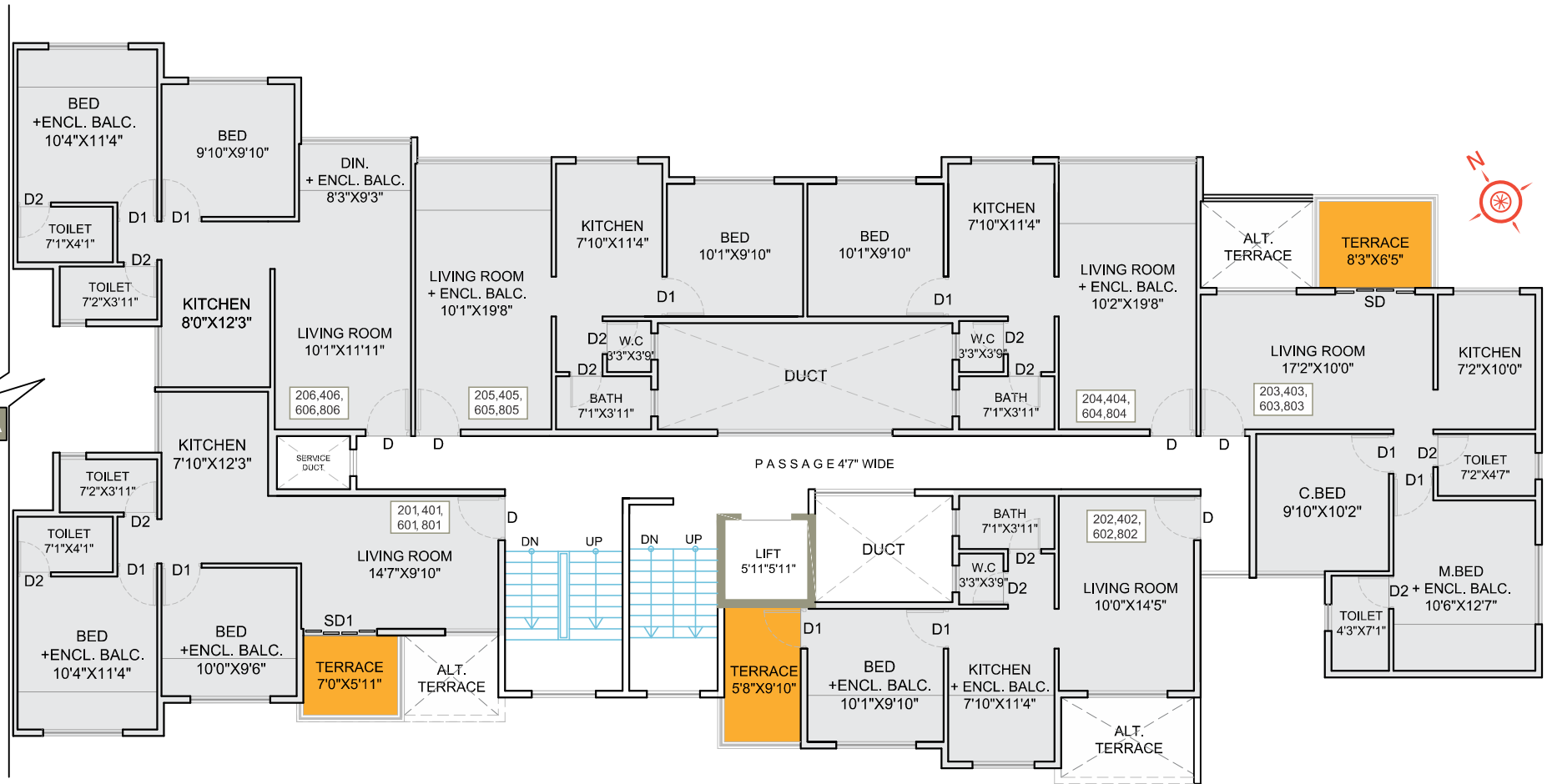


BUILDING - B

Typical floor plan
(1st, 3rd, 5th & 7th Floor)



WING - A



A project by:



BUILDING - B

Typical floor plan

(2nd, 4th, 6th & 8th Floor)

